

ELF4 Antibody (Center)
Purified Rabbit Polyclonal Antibody (Pab)
Catalog # AP7185c**Specification**

ELF4 Antibody (Center) - Product Information

Application	WB, FC,E
Primary Accession	Q99607
Other Accession	Q9Z2U4 , Q60775 , P32519 , A0JN51
Reactivity	Human
Predicted	Bovine, Mouse
Host	Rabbit
Clonality	Polyclonal
Isotype	Rabbit IgG
Calculated MW	70730
Antigen Region	211-237

ELF4 Antibody (Center) - Additional Information**Gene ID** 2000**Other Names**ETS-related transcription factor Elf-4, E74-like factor 4, Myeloid Elf-1-like factor, ELF4
{ECO:0000312|EMBL:CAI428821}**Target/Specificity**

This ELF4 antibody is generated from rabbits immunized with a KLH conjugated synthetic peptide between 211-237 amino acids from the Central region of human ELF4.

Dilution

WB~~1:1000

FC~~1:10~50

E~~Use at an assay dependent concentration.

Format

Purified polyclonal antibody supplied in PBS with 0.09% (W/V) sodium azide. This antibody is prepared by Saturated Ammonium Sulfate (SAS) precipitation followed by dialysis against PBS.

Storage

Maintain refrigerated at 2-8°C for up to 2 weeks. For long term storage store at -20°C in small aliquots to prevent freeze-thaw cycles.

Precautions

ELF4 Antibody (Center) is for research use only and not for use in diagnostic or therapeutic procedures.

ELF4 Antibody (Center) - Protein Information

Name ELF4 {ECO:0000312|EMBL:CAI42882.1}

Function Transcriptional activator that binds to DNA sequences containing the consensus 5'-WGGA-3'. Transactivates promoters of the hematopoietic growth factor genes CSF2, IL3, IL8, and of the bovine lysozyme gene. Acts synergistically with RUNX1 to transactivate the IL3 promoter (By similarity). Transactivates the PRF1 promoter in natural killer (NK) cells and CD8+ T cells (PubMed:[34326534](#)). Plays a role in the development and function of NK and NK T-cells and in innate immunity. Controls the proliferation and homing of CD8+ T-cells via the Kruppel-like factors KLF4 and KLF2 (By similarity). Controls cell senescence in a p53-dependent manner. Can also promote cellular transformation through inhibition of the p16 pathway. Is a transcriptional regulator of inflammation, controlling T-helper 17 (Th17) cells and macrophage inflammatory responses. Required for sustained transcription of anti-inflammatory genes, including IL1RN (PubMed:[34326534](#), PubMed:[35266071](#)). Is a negative regulator of pro-inflammatory cytokines expression including IL17A, IL1B, IL6, TNFA and CXCL1 (PubMed:[34326534](#), PubMed:[35266071](#)). Down-regulates expression of TREM1, a cell surface receptor involved in the amplification of inflammatory responses (By similarity) (PubMed:[34326534](#), PubMed:[35266071](#)).

Cellular Location

Nucleus, PML body. Note=Accumulation into PML nuclear bodies is mediated by PML

Tissue Location

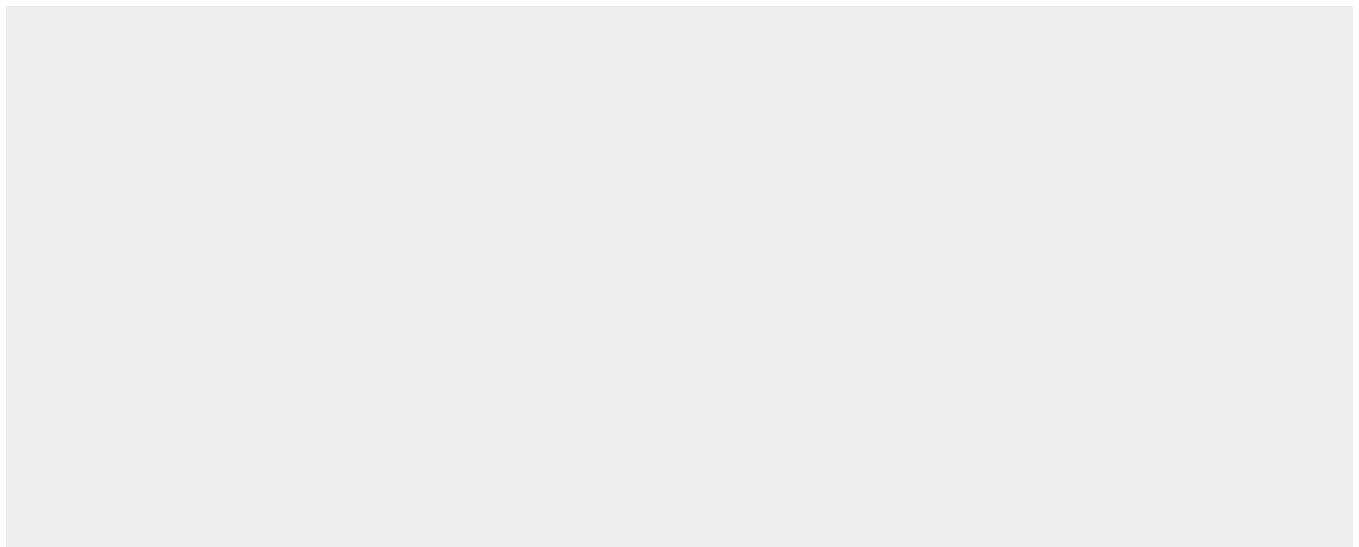
Abundantly expressed in the placenta and in a variety of myeloid leukemia cell lines. Moderate levels of expression in heart, lung, spleen, thymus, peripheral blood lymphocytes, ovary and colon. Lower levels of expression in Jurkat T-cells and other T-cell lines and no expression in brain.

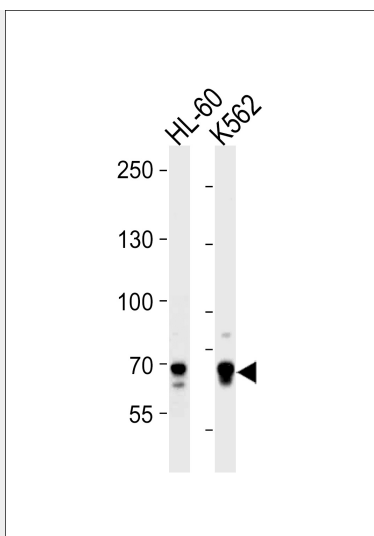
ELF4 Antibody (Center) - Protocols

Provided below are standard protocols that you may find useful for product applications.

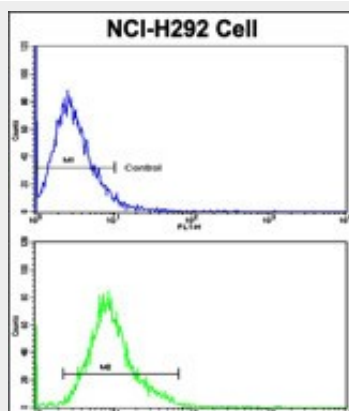
- [Western Blot](#)
- [Blocking Peptides](#)
- [Dot Blot](#)
- [Immunohistochemistry](#)
- [Immunofluorescence](#)
- [Immunoprecipitation](#)
- [Flow Cytometry](#)
- [Cell Culture](#)

ELF4 Antibody (Center) - Images





ELF4 Antibody (Center) (Cat. #AP7185c) western blot analysis in HL-60,K562 cell line lysates (35ug/lane).This demonstrates the ELF4 antibody detected the ELF4 protein (arrow).



Flow cytometric analysis of NCI-H292 cells using ELF4 Antibody (Center)(bottom histogram) compared to a negative control cell (top histogram). FITC-conjugated goat-anti-rabbit secondary antibodies were used for the analysis.

ELF4 Antibody (Center) - Background

ELF4 is transcriptional activator that binds to DNA sequences containing the consensus 5'-WGGA-3'. The protein acts synergistically with RUNX1 to transactivate the IL3 promoter. Also transactivates the PRF1 promoter in natural killer (NK) cells. This protein plays a role in the development and function of NK and NK T-cells and in innate immunity.

ELF4 Antibody (Center) - References

- Miyazaki Y., Sun X.Oncogene 13:1721-1729(1996)
- Aryee D.N.T., Petermann R.Gene 210:71-78(1998)
- Mao S., Frank R.C., Zhang J.Mol. Cell. Biol. 19:3635-3644(1999)